

GUIDELINES FOR IMPORTATION AND INSPECTION OF METAL SCRAP

DRAFT REVISION
JUNE 2021
First Edition



CONTENTS

	Page
1. Introduction	3
2. Scope of Application	3
3. Pre-conditions/pre-qualifiers for COA application	4
4. Procedure for importation and inspection of metal scrap into Malaysia	7
5. Schedule of Fees	19
6. Client Charter	23
7. Glossary of Terms	25
8. References	26

1. INTRODUCTION

- 1.1 Under the purview of Ministry of International Trade and Industry (MITI), all metal scraps intended to be imported into Malaysia are subjected to inspection process and issuance of Certificate of Approval (COA) as per Customs (Prohibition of Imports) Order 2017.
- 1.2 This Guideline specifies the requirements that must be adhered to for the importation, inspection and COA issuance of metal scraps into Malaysia for manufacturing purposes along with the objective of protecting the environment.
- 1.3 This Guideline also provides information on metal scrap criteria (including scheduled wastes and other impurities) that are allowable to be imported.

2. SCOPE OF APPLICATION

- 2.1 This Guideline covers all incoming importation of metal scrap into Malaysia intended for manufacturing purposes in various fields, particularly, iron & steel, aluminum and copper.
- 2.2 The tariff codes for metal scrap allowed for importation are as follows:
 - (i) HS Code 7204: Ferrous waste and scrap; remelting scrap ingots of iron or steel
 - (ii) HS Code 7404: Copper waste and scrap
 - (iii) HS Code 7602: Aluminium waste or scrap
- 2.3 The imported metal scrap must not contain or be contaminated by materials that allow it to be:
 - (i) classified as scheduled waste under First Schedule of the Environmental Quality Act (Scheduled Waste) Regulations 2005; or/and
 - (ii) defined as hazardous materials or other wastes under the Basel Convention.
- 2.4 Application of metal scrap imports can only be made by:
 - (i) Manufacturers approved with Manufacturing License from MITI.
 - (ii) Manufacturers who are exempted from Manufacturing License from MITI but issued with Exemption from Manufacturing License from Malaysian Investment Development Authority (MIDA) (ICA10).

(iii) Third parties or subsidiary of the iron and steel manufacturers, aluminium or copper manufactures who conduct trading activities (trading arm companies). Trading arm companies must have proof of document importing on behalf of manufactures as follows:

- approved invoices from ML holders or ICA10 manufacturers; and
- Memorandum of Agreement (MoA) with ML holders or ICA10 manufacturers.

2.5 The following parties are not allowed to import metal scrap into Malaysia:

- (i) Manufactures that do not fulfill requirements specified under 2.4 (i) and 2.4(ii).
- (ii) Traders purely undertaking trading activities.

2.6 The importation of metal scrap into Malaysia is allowed via both sea mode and land mode of transport at all ports of entry in Malaysia.

3 PRE-CONDITIONS/PRE-QUALIFIERS FOR COA APPLICATION

3.1 The following outlines the pre-conditions to be fulfilled before applying for COA.

3.2 **If you are a manufacturer:**

- (i) Must have a valid Manufacturing License (ML) or a Confirmation Letter that the Company is exempted from Manufacturing License (ICA 10) issued by MIDA.
- (ii) Hold a License under SIRIM Certification / SIRIM Eco-Label scheme; or undertake inspection or verification services at manufacturing premises from SIRIM; to ensure that manufacturers are consistently able to process scrap and waste that meets standard requirements and requirements under this Guideline.
- (iii) Ensure that the applied imported metal scrap volume is based on quota of raw material required, not exceeding maximum annual production capacity of ML holder or ICA10 manufacturer. SIRIM will conduct audit to verify and confirm the quota of raw materials and the maximum production capacity.
- (iv) Provide SIRIM with a Bank Guarantee. This Bank Guarantee will be determined based on the maximum shipping and incidental cost to country of origin (per shipment) to ensure compliance of the rules imposed through this Guideline.

- (v) The premises are in operation and have complied with the Environmental Quality Act 1974 and its related Regulations.
- (vi) Ensure that the storage space / capacity of imported metal scrap materials is adequate and good housekeeping is practiced.

Criteria imposed is as per table below:

HS Code 7204 (Ferrous waste and scrap; remelting scrap ingots of iron or steel)

No	Criteria Grouping	Requirement (% by weight)
1.	Solid Ferrous	Minimum: 94.75%
2.	Solid Non- Ferrous	Maximum: 5.0 %
3.	Other recoverable material including plastic	Maximum: 0.25%
4.	Scheduled waste including electrical and electronic	0%
	Total	100%

HS Code 7404 (Copper waste and scrap)

No	Criteria Grouping	Requirement (% by weight)
1.	Solid Non- Ferrous	Minimum: 94.75%
2.	Solid Ferrous	Maximum: 5.0 %
3.	Other recoverable material including plastic	Maximum: 0.25%
4.	Scheduled waste including electrical and electronic	0%
	Total	100%

HS Code 7602 (Aluminium waste or scrap)

No	Criteria Grouping	Requirement (% by weight)
1.	Solid Non- Ferrous	Minimum: 94.75%
2.	Solid Ferrous	Maximum: 5.0 %
3.	Other recoverable material including plastic	Maximum: 0.25%
4.	Scheduled waste including electrical and electronic	0%
	Total	100%

- The expected total shipment weight of metal scrap (solid ferrous & solid non-ferrous) will be up to 99.75%.

- The metal scrap shall not contain or is contaminated with hazardous materials that allow it to be subjected to hazardous materials or any waste under the Basel Convention, and does not contain other impurities.
- Crushed or shredded form of metal scrap of sizes less than 5 mm is not allowed for importation.
- Manufacturers must have waste management/establish recycling process for all its recoverable materials including plastics.

In the event of non-compliance, manufacturer shall:

- (i) Return the imported metal scrap to the country of origin or dispose of in the country with cost borne by importer/manufacturer.

Note:

- a. Non-compliant metal scrap due to the presence of scheduled waste or hazardous substance shall be returned to country of origin.
- b. Other non-compliances in which returning the imported metal scrap to country of origin is not possible, the metal scrap shall be disposed in the country.
- (ii) Ensure that the management of e-waste (SW110) resulting from segregation work (segregation) is handled in accordance with the requirements of the Environmental Quality (Scheduled Waste) Regulations 2005.
- (iii) Conduct an environmental audit based on Section 33A of the Environmental Quality Act 1974 on e-waste management.

3.3 If you are a Trading Arm Company or a third-party importer:

- (i) Must have approved invoices from ML holders or ICA10 manufacturers, and Memorandum of Agreement (MoA) with ML holders or ICA10 manufacturers.
- (ii) Ensure the imported metal scrap volume is proportionate to the quota of ML Holders/ ICA10 manufacturers accorded based on their annual production capacity.
- (iii) Ensure the ML Holders / ICA 10 manufacturers hold a License under SIRIM Certification / Eco-Label scheme or undertake inspection/verification services at manufacturing premises from SIRIM.
- (iv) Provide SIRIM with a Bank Guarantee. This Bank Guarantee will be determined based on the maximum shipping and incidental cost to country of origin (per shipment) to ensure compliance of the rules imposed.

In the event of non-compliance, the trading arm company or a third party will have to:

- (i) Return the imported metal scrap to the country of origin or dispose of in the country with cost borne by importer/trading arm company/ third party.

3.4 If you are Shipping and Logistics Agents, Cargo Transport and Carriers / Shipping Liners:

- (i) Ensure that the declared consignee is a manufacturer or trading arm or a third party companies that has a valid premise and relevant licenses.
- (ii) Ensure that the declaration of goods is true based on declaration made for transported goods.

4 PROCEDURE FOR IMPORTATION AND INSPECTION OF METAL SCRAP INTO MALAYSIA

4.1 Methods for Importation and Inspection of Metal Scrap

- 4.1.1 Importation of metal scrap must have COA issued by SIRIM based on inspection compliances in order to obtain full clearance at port of entries in Malaysia.
- 4.1.2 Applicants shall ensure they have met all the pre-conditions/ pre-qualifiers as stated under clause 3 before applying COA from SIRIM.
- 4.1.3 There are four (4) available Methods for Importation and Inspection of Metal Scrap into Malaysia which have different inspection requirements for applying and issuance of COA as follows:

	NO.	METHODS
WITHOUT SIRIM Approved Metal Scrap Supplier	(i)	Type 1A
	(ii)	Type 1B
	(iii)	Type 1C
WITH SIRIM Approved Metal Scrap Supplier	(iv)	Type 2

Note:

- Refer **TABLE 1** for the details of each method.
- To be SIRIM's Approved Metal Scrap Supplier: applicants must apply to SIRIM for suppliers to be in the approved list by SIRIM. SIRIM will conduct evaluation and audit at the supplier's factory premises for approval. Refer **FLOWCHART 7** on the process flow to obtain SIRIM Approved Metal Scrap Supplier Certificate.

4.1.4 Applicants are required to choose one (1) of the methods and undertake all requirements/processes under the chosen method including compliance to inspection process for issuance of COA by SIRIM.

TABLE 1 : METHODS FOR IMPORTATION AND INSPECTION OF METAL SCRAP INTO MALAYSIA

REQUIREMENTS/PROCESSES	METHODS			
	WITHOUT SIRIM Approved Metal Scrap Supplier			WITH SIRIM Approved Metal Scrap Supplier
	TYPE 1A	TYPE 1B	TYPE 1C	TYPE 2
1. Mode of Transport	Sea Mode & Land Mode	Sea Mode & Land Mode	Sea Mode only (Not applicable to Land Mode)	Sea Mode & Land Mode
2. Manufacturer – has ML/ICA 10 Trading arm companies – has MoA and approved invoices with ML/ICA 10 manufacturing companies	√ (Required)	√ (Required)	√ (Required)	√ (Required)
3. SIRIM Certification/Eco-Label Certification License	√ (Required)	√ (Required)	√ (Required)	√ (Required)
4. Pre-shipment Inspection (at country of origin)	√ (Done by SIRIM)	√ (Done by Foreign Inspection Body that has signed an MoA with SIRIM)	√ (Done by Foreign Inspection Body without MoA with SIRIM)	X (Not required)
5. Post-shipment Inspection (Off-Board – Inside Port of Entry)	X (Not required)	X (Not required)	√ (Required. Done by SIRIM)	X (Not required)
6. Issuance of Certificate of Approval (COA)	√ (Require compliance of Pre- Shipment Inspection)	√ (Require compliance of Pre- Shipment Inspection)	√ (Require compliance of Pre- Shipment & Post- Shipment Inspection)	√ (Not require Pre- Shipment or Post- Shipment inspection)
7. Inspection at Factory Storage Yard	X (Not required)	X (Not required)	X (Not required)	√ (Required. Done by SIRIM)

Refer **FLOWCHART 1** - Overview of the Procedure for Importation and Inspection of Metal Scrap into Malaysia.

4.2 **Pre-Shipment Inspection Process - Applicable only for Method Type 1A, Type 1B & Type 1C.**

- 4.2.1 Applicant must apply Pre-shipment inspection to be conducted at the country of origin at factory storage yard by:
- (i) SIRIM; or
 - (ii) Foreign Inspection Body (FIB) of preference that are available in SIRIM's "Approved Foreign Inspection Body (FIB)" list.
- 4.2.2 Applicant may also use other accredited Inspection Body but must ensure the Inspection Body is successfully registered with SIRIM before they can conduct the Pre-shipment inspection.
- 4.2.3 SIRIM will not accept the Inspection Report issued by an unregistered Inspection Body.
- 4.2.4 An Inspection Body can be registered as FIB under SIRIM's "Approved Foreign Inspection Body (FIB)" list by the following methods:
- (i) an applicant applying to register on behalf of the Inspection Body or;
 - (ii) The Inspection Body applying directly to SIRIM.
- 4.2.5 The applicant or Inspection Body must submit the following documents for registration:
- (i) Copy of certificate of accreditation ISO/IEC 17020
 - (ii) Copy of scope of accreditation
 - (iii) List of competent inspector(s)
- 4.2.6 SIRIM will evaluate only completed documents for registration approval.
- 4.2.7 SIRIM will notify the applicant/ Inspection Body and include the Inspection Body in SIRIM's "Approved Foreign Inspection Body (FIB)" list. SIRIM will also notify applicant/Inspection Body in the case of rejection.
- 4.2.8 Any registered FIB may request to sign an MoA with SIRIM and SIRIM will conduct its due diligence before proceeding.
- 4.2.9 The FIB that has signed a MoA with SIRIM will be updated its status in SIRIM's "Approved Foreign Inspection Body (FIB)" list.
- 4.2.10 The process flow for registration of a Foreign Inspection Body (FIB) is as per **FLOWCHART 2.**

- 4.2.11 Applicant to proceed with application and arrangement for Pre-shipment inspection to SIRIM or FIB.
- 4.2.12 Applicant must provide shipping documents (Import documents, Invoice and Packing List) and Manufacturing License (ML) or Confirmation Letter for a Company Exempted from Manufacturing License (ICA 10) issued by MIDA.
- 4.2.13 Applicant must arrange for the Pre-shipment inspection activity.
- 4.2.14 The authorized inspector will conduct the Pre-shipment inspection on selected samples based on sampling method according to ISO 2859-1:1999.
- 4.2.15 The Pre-shipment inspection will cover the following activities:
- (i) Visual inspection
 - (ii) Segregation and measure
 - All cost of waste segregation and manpower for segregation works must be paid by applicant. These segregation works must be witnessed by the authorized inspector.
 - (iii) Radiation (Scan and measure= +0.25 µGy/h max.)
- 4.2.16 Upon completion of the inspection, the Pre-shipment inspection report will be issued to the applicant.
- 4.2.17 The Pre-shipment inspection report (issued by FIB or SIRIM) must contain information on:
- Visual inspection of the vessel transporting the metal scrap.
 - Evidences such as photos of inspection and metal scrap.
 - Visual evidence of loading of the metal scrap including the final condition of the metal scrap (inside vessel or container)
 - Visual evidence of segregation and grouping
 - Verification of shipping documents (Import documents, Invoice and Packing List) and Manufacturing License (ML) or Confirmation Letter for a Company Exempted from Manufacturing License (ICA 10) issued by MIDA.
 - Method of sampling according to ISO 2859-1:1999
 - Segregation, calculation, interpolation, weighing.
 - Testing report on metal scrap classification, scheduled wastes, other impurities and hazardous elements (if applicable).

- 4.2.18 If the Pre-shipment inspection results do not comply with the criteria in this Guideline, the metal scrap is not allowed to be imported into Malaysia.
- 4.2.19 If the Pre-shipment inspection results comply with this Guideline, the metal scrap is allowed to be imported into Malaysia and the applicant may proceed to apply for COA from SIRIM. Refer clause 4.3.
- 4.2.20 The Pre-shipment inspection report is valid for three (3) months.
- 4.2.21 The complete process flow for Pre-shipment Inspection is as per **FLOWCHART 3**.

4.3 COA Application:

- 4.3.1 Application for COA is **ONLY ALLOWED** for applicants who fulfilled the preconditions/pre-qualifiers listed under clause 3.
- 4.3.2 For manufacturers, documents to be submitted for application of COA are as follows:

No.	Document required
1.	Shipping documents (Invoice, Packing List & Import Declaration)
2.	Valid Pre-shipment inspection report (For Method Type 1A, 1B and 1C)
3.	Inspection reports issued by SIRIM Approved Supplier (For Method Type 2 only)
4.	Proof of SIRIM Approved Metal Scrap Supplier Certificate (For Method Type 2 only)
5.	Proof of manufacturing license (ML) or Confirmation Letter for a Company Exempted from Manufacturing License (ICA 10) issued by MIDA.
6.	Bank Guarantee
7.	SIRIM Certificate

- 4.3.3 For trading arm companies, documents to be submitted for application of COA are as follows:

No.	Document required
1.	Shipping documents (Invoice, Packing List and Import Declaration)
2.	Valid Pre-shipment inspection report (For Method Type 1A, 1B and 1C)
3.	Inspection reports issued by SIRIM Metal Scrap Approved Supplier (For Method Type 2 only)
4.	Proof of manufacturing license (ML) or Confirmation Letter for a Company Exempted from Manufacturing License (ICA 10) issued by MIDA.
5.	Verified invoice from ML holders or ICA 10 manufacturers and Memorandum of Agreement (MoA) with ML holders or ICA 10 manufacturers
6.	Bank Guarantee
7.	SIRIM Certificate

- 4.3.4 SIRIM will evaluate completed documents submitted by the applicants for COA. Non-satisfactory information or incomplete application will be rejected. Re-application is allowed should COA conditions be fulfilled and the required documents are complete.

- 4.3.5 Upon acceptance of COA application, SIRIM will notify and issue an invoice to the applicant, and applicant must make payment for the following fees:

- COA; and
- Post-shipment inspection – for Method Type 1C only; or
- Inspection at factory storage yard – for Method Type 2 only

- 4.3.6 Once SIRIM receives payment from the applicant, SIRIM will issue COA EXCEPT for applicant that chooses Method Type 1C. The validity of COA is one (1) month. For applicant that choose Type 1C can proceed with Post-shipment inspection process before COA can be issued. Refer clause 4.4.

- 4.3.7 Applicant that has received COA from SIRIM (Method Type 1A, Type 1B or Type 2) can proceed to obtain clearance approval at Port of Entry from RMCD and Port Authority/ Port Operator to deliver the imported metal scrap to designated/manufacturer premises. Manufacturer may proceed for manufacturing processes.

4.3.8 SIRIM will regularly conduct inspection at the factory's storage yard to ensure compliance of the incoming imported metal scrap to the requirements and criteria of this Guideline for importation using Method Type 2.

4.3.9 SIRIM will undertake audit checks at the manufacturer's premises under SIRIM Certification/ Eco-Label Certification scheme or conduct inspection/verification services at manufacturing premises to ensure the manufacturers are consistently able to process waste that meets standard requirements and requirements under this Guideline.

4.3.10 The complete process flow for COA Application is as per **FLOWCHART 4**.

4.4 **Post-shipment inspection for COA Issuance- for Method Type 1C only**

4.4.1 Applicant must undertake Post-shipment inspection process by SIRIM for all imported metal scrap into Malaysia via sea mode of transport using Method Type 1C at port of entry before COA can be issued.

4.4.2 Post-shipment inspection must be performed by SIRIM authorized inspector.

4.4.3 Applicant must notify SIRIM the time and date for inspection at least three (3) days in advance.

4.4.4 Applicant must provide "ORIGINAL" Shipping Documents i.e Pre- shipment inspection report, K1 Form, Invoice, Packing List & Bill of Lading during the inspection.

4.4.5 Applicant must arrange for Post-shipment inspection activity on-board if shipment is via bulk/open vessel or off-board if shipment is using containers at designated area prepared by Port Authority/ Port Operator at Port of Entry.

4.4.6 Post-shipment inspection will involve the following:

- (i) Visual Inspection;
- (ii) Radiation (Scan and measure= +0.25 µGy/h max.); and
- (iii) Segregation.

- All cost of metal scrap segregation and manpower for segregation works must be born by applicant. These segregation works must be witnessed by the authorized inspector.

- Metal scrap must be segregated as follows (if imports contain all these elements in its shipment):
 - Solid ferrous
 - Solid non-ferrous
 - Solid plastics
 - Scheduled waste including electrical and electronic waste
 - Other Impurities
- Authorized inspector will select samples from each grouping based on MS ISO 2859-1, Sampling Plan according to General Inspection Level II and Acceptance Quality Limit (AQL) 6.5. Samples will be weighed and calculated based on the percentage from the incoming scrap.

Example for shipment via containers:

Imported metal scrap using containers = 50 containers

Sampling using AQL (General Inspection Level II, 6.5) = 8 containers

From each 8 containers, samples will be taken for:

- 1) Visual inspection
- 2) Segregation, weighing and measuring
- 3) Radiation (Scan and measure)

The external exposure of the radiation rate for the material including the packaging shall not exceed $+0.25\mu\text{Gy/h}$ than the normal natural background radiation level.

Example : Natural background level = 0.1

Radiation reading = $0.1 + 0.25\mu\text{Gy/h}$
 = $0.35\mu\text{Gy/h}$ max.

4.4.7 Upon completion of Post-shipment inspection, SIRIM will issue an inspection report to the applicant that will contain information on:

- Verification of Pre-shipment inspection report.
- Evidences such as photos of inspection and metal scrap.
- Visual inspection of the vessel transporting the metal scrap.
- Visual evidence of segregation and grouping.
- Verification and evidence of shipping documents (K1 form, Invoice, Packing List & Bill of Lading) and Manufacturing License (ML) or Confirmation Letter for a Company Exempted from Manufacturing License (ICA 10) issued by MIDA.
- Method of sampling.
- Segregation, calculation, interpolation, weighing.
- Testing report on metal scrap classification, scheduled wastes, other impurities and hazardous elements (if applicable).

- 4.4.8 If Post-shipment results do not comply with the requirements under this Guideline, the applicant will have to return the imported metal scrap to the country of origin at their own cost.
- 4.4.9 If Post-shipment results comply with the requirements under this Guideline, SIRIM will issue the COA.
- 4.4.10 Upon issuance of the COA, the applicant can proceed to obtain clearance approval from RMCD and Port Authority/ Port Operator to unload and deliver the imported metal scrap to designated/manufacturer premises for manufacturing process.
- 4.4.11 SIRIM will undertake audit verification at the manufacturer's premises under SIRIM Certification/Eco-Label scheme to ensure that manufacturers are adhering to standard set and requirements under this Guideline.
- 4.4.12 The complete process flow for Post-shipment inspection for COA issuance is as per **FLOWCHART 5**.

4.5 Inspection at Factory Storage Yard (For Method Type 2 Only)

- 4.5.1 Applicant must undertake inspection process for all imported metal scrap into Malaysia by each shipment using Method Type 2 at a designated factory storage yard.
- 4.5.2 The inspection must be performed by SIRIM authorized inspector.
- 4.5.3 Applicant must notify SIRIM the time and date for inspection at least three (3) days in advance.
- 4.5.4 Applicant must provide "ORIGINAL" Shipping Documents i.e., K1 Form, Invoice, Packing List & Bill of Lading during the inspection.
- 4.5.5 Applicant must arrange the full process for inspection activity to be undertaken.
 - (i) The authorized inspector will conduct sampling of containers based on AQL standard ISO 2859-1:1999.
 - (ii) All selected samples are required to be inspected at the designated factory incoming storage yard.

Example:

Imported metal scrap using containers = 50 containers

Sampling using AQL (General Inspection Level II, 6.5) = 8 containers

From each 8 containers, samples will be taken for:

- 1) Visual inspection.
- 2) Segregation, weighing and measuring.
- 3) Radiation (Scan and measure).

The external exposure of the radiation rate for the materials including packaging shall not exceed $+0.25\mu\text{Gy/h}$ than the normal natural background radiation level.

- Example : Natural background level = 0.1
Radiation reading = $0.1 + 0.25\mu\text{Gy/h}$
= $0.35\mu\text{Gy/h}$ maximum

4.5.6 Upon completion of inspection, SIRIM will issue an inspection report to the applicant that will contain information on:

- Evidences such as photos of inspection and metal scrap.
- Visual inspection of the vessel transporting the metal scrap.
- Visual inspection of unloading the metal scrap.
- Visual evidence of any finding from visual inspection.
- Verification and evidence of shipping documents (K1 form, Invoice, Packing List & Bill of Lading) and Manufacturing License (ML) or Confirmation Letter for a Company Exempted from Manufacturing License (ICA 10) issued by MIDA.
- Proof of SIRIM Approved Supplier obtained.
- Method of sampling.
- Testing report on scheduled wastes, other impurities and hazardous elements (if applicable).

4.5.7 If inspection results do not comply with the requirements under this Guideline:

- SIRIM will suspend SIRIM Approved Metal Scrap Supplier Certificate obtained prior.
- Applicant to manage the waste/scheduled wastes disposal (if applicable).
- Applicant not approved to continue importing metal scrap via Method Type 2.

4.5.8 SIRIM will undertake audit verification at the manufacturer's premises under SIRIM Certification/Eco-Label scheme to ensure that manufacturers are adhering to standard set and requirements under this Guideline.

4.5.9 The complete process flow for Post-shipment inspection for COA issuance is as per **FLOWCHART 6.**

4.6 Sampling Plan for Inspection

- 4.6.1 Authorized inspector will select samples from each grouping based on MS ISO 2859-1, Sampling Plan according to General Inspection Level II and Acceptance Quality Limit (AQL) 6.5. Refer TABLE 2.

TABLE 2: MS ISO 2859-1, SAMPLING PLAN ACCORDING TO GENERAL INSPECTION LEVEL II AND ACCEPTANCE QUALITY LIMIT (AQL) 6.5.

Lot size (Number of ordered products)	Q General Inspection Levels			Q Special Inspection Levels			
	I	II	III	S-1	S-2	S-3	S-4
2 → 8	A	A	B	A	A	A	A
9 → 15	A	B	C	A	A	A	A
16 → 25	B	C	D	A	A	B	B
26 → 50	C	D	E	A	B	B	C
51 → 90	C	E	F	B	B	C	C
91 → 150	D	F	G	B	B	C	D
151 → 280	E	G	H	B	C	D	E
281 → 500	F	H	J	B	C	D	E
501 → 1 200	G	J	K	C	C	E	F
1 201 → 3 200	H	K	L	C	D	E	G
3 201 → 10 000	J	L	M	C	D	F	G
10 001 → 35 000	K	M	N	C	D	F	H
35 001 → 150 000	L	N	P	D	E	G	J
150 001 → 500 000	M	P	Q	D	E	G	J
500 001 → 1 000 000	N	Q	R	D	E	H	K

ISO 2859-1, ANSI/ASQ Z1.4, MIL-STD 105E, Single Sampling Plan

	NUMBER OF SAMPLES	Acceptance Quality Limits (AQL) in %																
		0.015	0.025	0.040	0.065	0.10	0.15	0.25	0.40	0.65	1.0	1.5	2.5	4.0	6.5	10	15	25
		✓	✗	✓	✗	✓	✗	✓	✗	✓	✗	✓	✗	✓	✗	✓	✗	✓
A	2	↓	↓	↓	↓	↓	↓	↓	↓	↓	↓	↓	↓	0 1	↓	↓	1 2	
B	3	↓	↓	↓	↓	↓	↓	↓	↓	↓	↓	↓	0 1	↑	↓	1 2	2 3	
C	5	↓	↓	↓	↓	↓	↓	↓	↓	↓	↓	0 1	↑	↓	1 2	2 3	3 4	
D	8	↓	↓	↓	↓	↓	↓	↓	↓	↓	0 1	↑	↓	1 2	2 3	3 4	5 6	
E	13	↓	↓	↓	↓	↓	↓	↓	↓	0 1	↑	↓	1 2	2 3	3 4	5 6	7 8	
F	20	↓	↓	↓	↓	↓	↓	↓	0 1	↑	↓	1 2	2 3	3 4	5 6	7 8	10 11	
G	32	↓	↓	↓	↓	↓	↓	0 1	↑	↓	1 2	2 3	3 4	5 6	7 8	10 11	14 15	
H	50	↓	↓	↓	↓	↓	0 1	↑	↓	1 2	2 3	3 4	5 6	7 8	10 11	14 15	21 22	
J	80	↓	↓	↓	↓	↓	0 1	↑	↓	1 2	2 3	3 4	5 6	7 8	10 11	14 15	21 22	
K	125	↓	↓	↓	↓	0 1	↑	↓	1 2	2 3	3 4	5 6	7 8	10 11	14 15	21 22	↑	
L	200	↓	↓	↓	0 1	↑	↓	1 2	2 3	3 4	5 6	7 8	10 11	14 15	21 22	↑	↑	
M	315	↓	↓	0 1	↑	↓	1 2	2 3	3 4	5 6	7 8	10 11	14 15	21 22	↑	↑	↑	
N	500	↓	0 1	↑	↓	1 2	2 3	3 4	5 6	7 8	10 11	14 15	21 22	↑	↑	↑	↑	
P	800	0 1	↑	↓	1 2	2 3	3 4	5 6	7 8	10 11	14 15	21 22	↑	↑	↑	↑	↑	
Q	1250	↑	↓	1 2	2 3	3 4	5 6	7 8	10 11	14 15	21 22	↑	↑	↑	↑	↑	↑	
R	2 000	↑	1 2	2 3	3 4	5 6	7 8	10 11	14 15	21 22	↑	↑	↑	↑	↑	↑	↑	
✓ Acceptance ✗ Rejection																		
ISO 2859-1, ANSI/ASQ Z1.4, MIL-STD 105E, Single Sampling Plan, Normal Severity																		

5 SIRIM SCHEDULE OF FEES

a. Pre-Shipment Inspection by SIRIM (Sea Mode/ Land Mode of transport)

No	Description	Fee (RM)
1.	First 3000 MT	6,000 / Shipment
2.	Subsequent Weight (>3000 MT)	1.80 / Ton
3.	Inspection Report	500.00 / Shipment
4.	Incidental	As charged, where applicable for accommodation, living allowances and transportation/mileage

b. COA Fee

No	Description	Fee (RM)
1.	New application fee & Issuance of Certificate of Approval (COA) / Shipment <i>(Payable upon application & non-refundable)</i>	RM350 per shipment

c. Post-shipment inspection Fee for Method Type 1C

(i) On-board (Shipment via Bulk/Open Vessel)

No	Description	Fee (RM)
1.	First 3000 MT	2,700 / Shipment
2.	Subsequent Weight (>3000 MT)	0.70/MT
3.	Inspection Report	500/Shipment
4.	Testing Fee (If Applicable)	1,500/day/shipment
5.	Incidental SIRIM at its discretion will assign an authorized inspector from SIRIM branch nearest to the Port of Entry.	Refer TABLE 3 : Incidental for Post-shipment inspection (For Method Type 1C)

(ii) **Off-board (Shipment via container)**

No.	Description	Fee (RM)
1.	Post-shipment Inspection Fee for every sample container	
	<ul style="list-style-type: none">First 3 containers	RM 300
	<ul style="list-style-type: none">Subsequent 1 sample container	RM 100
	<ul style="list-style-type: none">SIRIM QAS Inspection Report	RM 500
	Example: Imported metal scrap using container = 50 containers Sampling using AQL (General Inspection Level II, 6.5) = 8 containers Total fee for first 3 containers = RM 100 x 3 = RM 300 Subsequent container = RM100 x 5 = RM 500 Inspection Report = RM 500 Total = <u>RM 1300</u> Note: From each 8 containers, samples will be taken for: 1) Visual inspection 2) Segregation, weighing and measuring 3) Radiation inspection (Scan and measure)	
2.	Testing Fee (If Applicable)	1,500/day/shipment
3.	Incidental for Post-shipment Inspection: SIRIM at its discretion will assign an authorized inspector from SIRIM branch nearest to the Port of Entry.	Refer TABLE 3: Incidental for Post-shipment Inspection

TABLE 3: INCIDENTAL FOR POST-SHIPMENT INSPECTION (FOR METHOD TYPE 1C)**SIRIM HQ to Port (Central Region)**

No	Port	Incidental (RM) / Round Trip
1.	West Port, Klang	72
2.	North Port, Klang	48
3.	Lumut Port, Perak	336

SIRIM Johor to Port

No	Port	Incidental (RM) / Round Trip
1.	Johor Port, Pasir Gudang	72
2.	Tanjung Langsat Port, Pasir Gudang	96
3.	Tanjung Pelepas Port, Gelang Patah	72

SIRIM Penang to Port

No	Port	Incidental (RM) / Round Trip
1.	NBCT Port	24
2.	BWCT Port	24

SIRIM Pahang to Port

No	Port	Incidental (RM) / Round Trip
1.	Kuantan Port, Pahang	24
2.	Kertih Port, Terengganu	160
3.	Kemaman Port, Terengganu	160

SIRIM Sarawak to Port

No	Port	Incidental (RM) / Round Trip
1.	Kuching Port	16
2.	Miri Port	Flight Ticket + Incidental (0.80/km)
3.	Bintulu Port	Flight Ticket + Incidental (0.80/km)
4.	Sibu Port	Flight Ticket + Incidental (0.80/km)

SIRIM Sabah to Port

No	Port	Incidental (RM) / Round Trip
1.	Kota Kinabalu Port	40
2.	Sepanggar Port	24
3.	Sandakan Port	Flight Ticket + Incidental (0.80/km)
4.	Tawau Port	Flight Ticket + Incidental (0.80/km)
5.	Lahad Datu	Flight Ticket + Incidental (0.80/km)
6.	Labuan Port	Flight Ticket + Incidental (0.80/km)

d. Inspection at Factory Storage Yard (For Method Type 2 only)

No.	Description	Fee (RM)
	a. Inspection Fee for every sample container	
	<ul style="list-style-type: none">First 3 containers	RM 300
	<ul style="list-style-type: none">Subsequent 1 sample container	RM 100
	<ul style="list-style-type: none">SIRIM QAS Inspection Report	RM 500
	Example: Imported metal scrap using container = 10 containers Sampling using AQL (General Inspection Level II, 6.5) = 3 containers Total fee for 3 containers = RM 100 x 3 = RM 300 Inspection Report = RM 500 Total = <u>RM 800</u>	
	Note: From each 3 containers, samples will be taken for: 1) Visual inspection 2) Segregation, weighing and measuring 3) Radiation inspection (Scan and measure)	
1.	b. Inspection Fee for scrap using bulk vessel/open vessel	
	<ul style="list-style-type: none">First 3,000 MT	2,700 / shipment
	<ul style="list-style-type: none">Subsequent Weight (>3000 MT)	0.70/ MT
	<ul style="list-style-type: none">SIRIM QAS Inspection Report	500
	<ul style="list-style-type: none">Testing Fee (if applicable)	1,500/day/shipment
	Example: Imported metal scrap using bulk vessel/open vessel = 5,000 MT Actual nos. of truck use to transfer to factory yard = 420 trucks Sampling using AQL (General Inspection Level II, 6.5) = 50 trucks Fee for first 3,000 MT = RM 2,700 Subsequent weight = 2000 MT x RM 0.70 = RM 1,400 Inspection Report = RM 500 Total = <u>RM 4,600</u>	
	Note: From 50 trucks, samples will be taken for: 1) Visual inspection 2) Segregation, weigh and measure 3) Radiation inspection (Scan and measure = +0.25uGy/h max)	

2.	Testing Fee (If Applicable)	1,500/day/shipment
3.	Incidental Charges for Inspection at Factory Storage Yard	As per SIRIM's standard rate

e. SIRIM Approved Metal Scrap Supplier (For Method Type 2 only)

No.	Description	Fee (RM)
1.	Application & Documents Evaluation	RM 2,500 /day (One-off)
2.	Initial Audit Fee	RM 1,500 /day (One-off)
3.	SIRIM Approved Supplier Certificate (Validity: 2 years)	RM 1,200
5.	Annual Surveillance Audit	RM 1,500
6.	Renewal of SIRIM Approved Supplier Certificate	RM 1,200
5.	Flight ticket & Accommodation	As per charged
6.	Other incidental charges	As per SIRIM standard rate

6 CLIENT CHARTER

a. Registration of Foreign Inspection Body (FIB)

Evaluate Foreign Inspection Body	1 working day
Approval of Foreign Inspection Body	1 working day
Register in SIRIM Approved FIB list	1 working day
Total	3 working days

b. Pre-Shipment Inspection by SIRIM

SIRIM issue invoice	1 working day
SIRIM performs inspection at Country of Origin	2-5 working days
SIRIM Issue inspection report to Applicant	2 working days
Total	5 – 8 working days

c. COA Application

SIRIM evaluates submitted shipping documents	1 working day
SIRIM issues invoice	1 working day
Total	2 working day

d. Post-shipment inspection (For Method Type 1C only)

Post-shipment inspection	1-5 working days
Inspection report and Approval	1 working day
Total	2-6 working days

e. COA Issuance

COA issuance upon payment (Type 1A, Type 1B and Type 2)	1 working day
COA issuance upon compliance of Post-shipment Inspection (1C)	1 working day

f. Inspection at Factory Storage Yard (For Method Type 2 only)

SIRIM issues quotation	1-2 working days
SIRIM schedule inspection	1-2 working days
SIRIM conduct inspection	1-5 working days
Inspection report and Approval	1-2 working day
Total	4-11 working days

g. SIRIM Approved Supplier (For Method Type 2 only)

SIRIM conduct document evaluation	1-2 working days
SIRIM issue Quotation	3-5 working days
SIRIM schedule for audit	1-2 working day
SIRIM conduct process audit for the MRF	1-3 working day/site
Total	6 – 12 working days

7 GLOSSARY OF TERMS

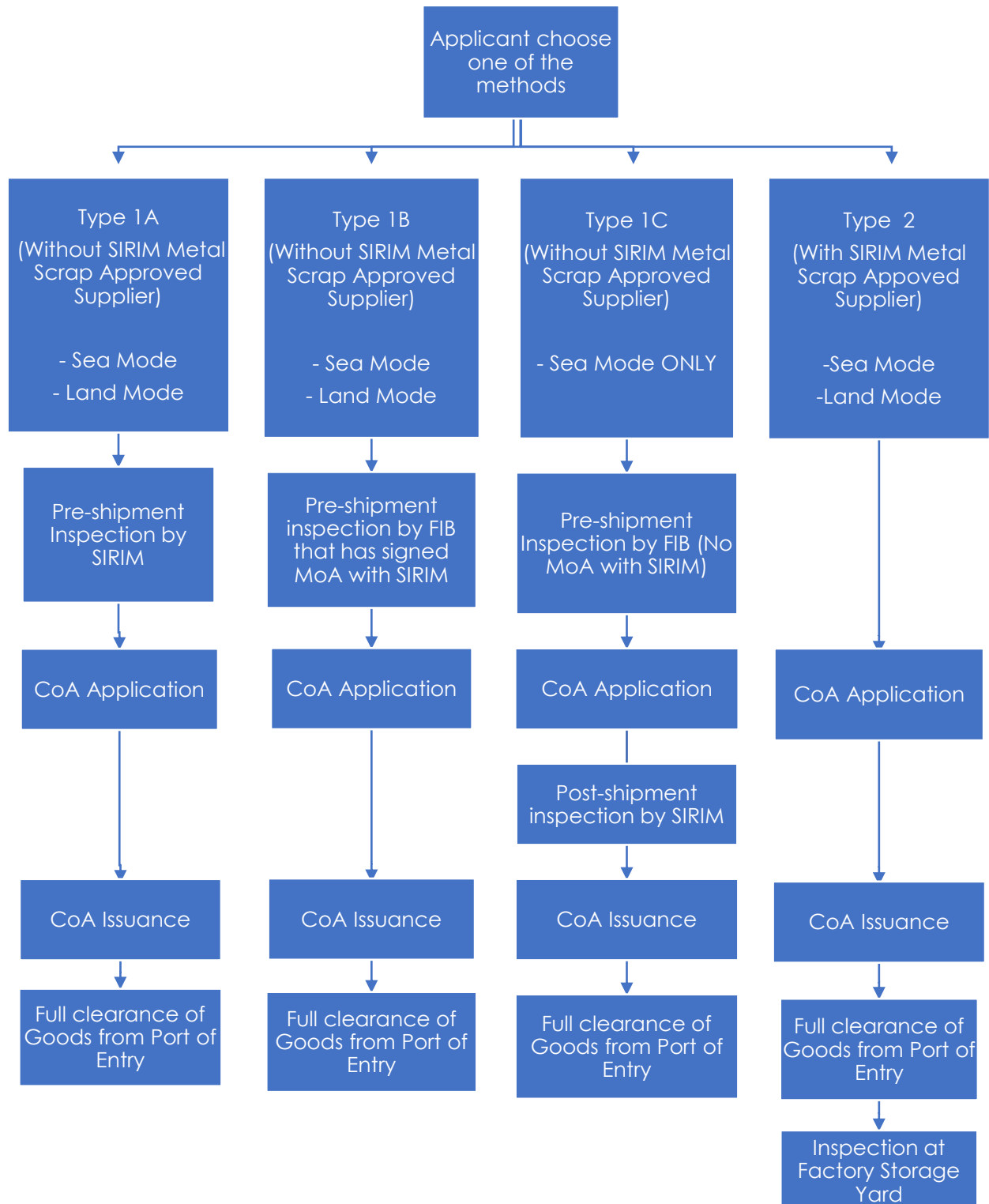
- 7.1 **Applicant** – Importer (Manufacturer or trading arm company) who applies for the importation of metal scrap into Malaysia.
- 7.2 **Authorized inspector** – Person who is responsible for performing the inspection activity authorized by SIRIM.
- 7.3 **Certificate of Approval (COA)** – Certificate of Approval or permit issued to applicant for metal scrap which has been inspected as complying with these Guidelines.
- 7.4 **Foreign Inspection Body** – Inspection body accredited to ISO/IEC 17020 with metal scrap inspection scope that has been registered with SIRIM.
- 7.5 **ICA10 manufacturers** - Manufacturers who are exempted from Manufacturing License from MITI but granted with Exemption from Manufacturing License from Malaysian Investment Development Authority (MIDA) (ICA10).
- 7.6 **Inspection report** – A report from SIRIM or Foreign Inspection Body for the metal scrap inspection.
- 7.7 **Manufacturing License (ML) holder**– A manufacturing company which already registered with Companies Commission of Malaysia (SSM) and obtained Manufacturing License (ML) from MITI and other licenses from relevant local authorities.
- 7.8 **Metal scrap** –Waste and scrap of precious metal or of metal clad with precious metal; other waste and scrap containing precious metal or precious metal compounds, of a kind used principally for the recovery of precious metal.
- 7.9 **Post-shipment inspection**– means inspection conducted at port of entry for the imported metal scrap before issuance of COA.
- 7.10 **Pre-shipment Inspection** – means an inspection conducted for metal scrap at country of origin by SIRIM or FIB
- 7.11 **Scheduled waste** - any waste that falls within the category of waste listed in the First Schedule, Environmental Quality (Scheduled Wastes) Regulations 2005.
- 7.12 **Shipping document** – A set of documents consist of Invoice, Packing List, Import Declaration, Bill of Lading & K1 Form from the scheduled incoming various scrap shipment.

- 7.13 **SW110** - Waste from electrical and electronic assemblies containing components such as accumulators, mercury-switches, glass from cathode-ray tubes and other activated glass polychlorinated biphenyl-capacitors, or contaminated with cadmium, mercury, lead, nickel, chromium, copper, lithium, silver, manganese or polychlorinated biphenyl.
- 7.14 **Trading arm company** – third parties or subsidiary of the iron and steel mills, aluminium producers or copper makers who conduct trading activities

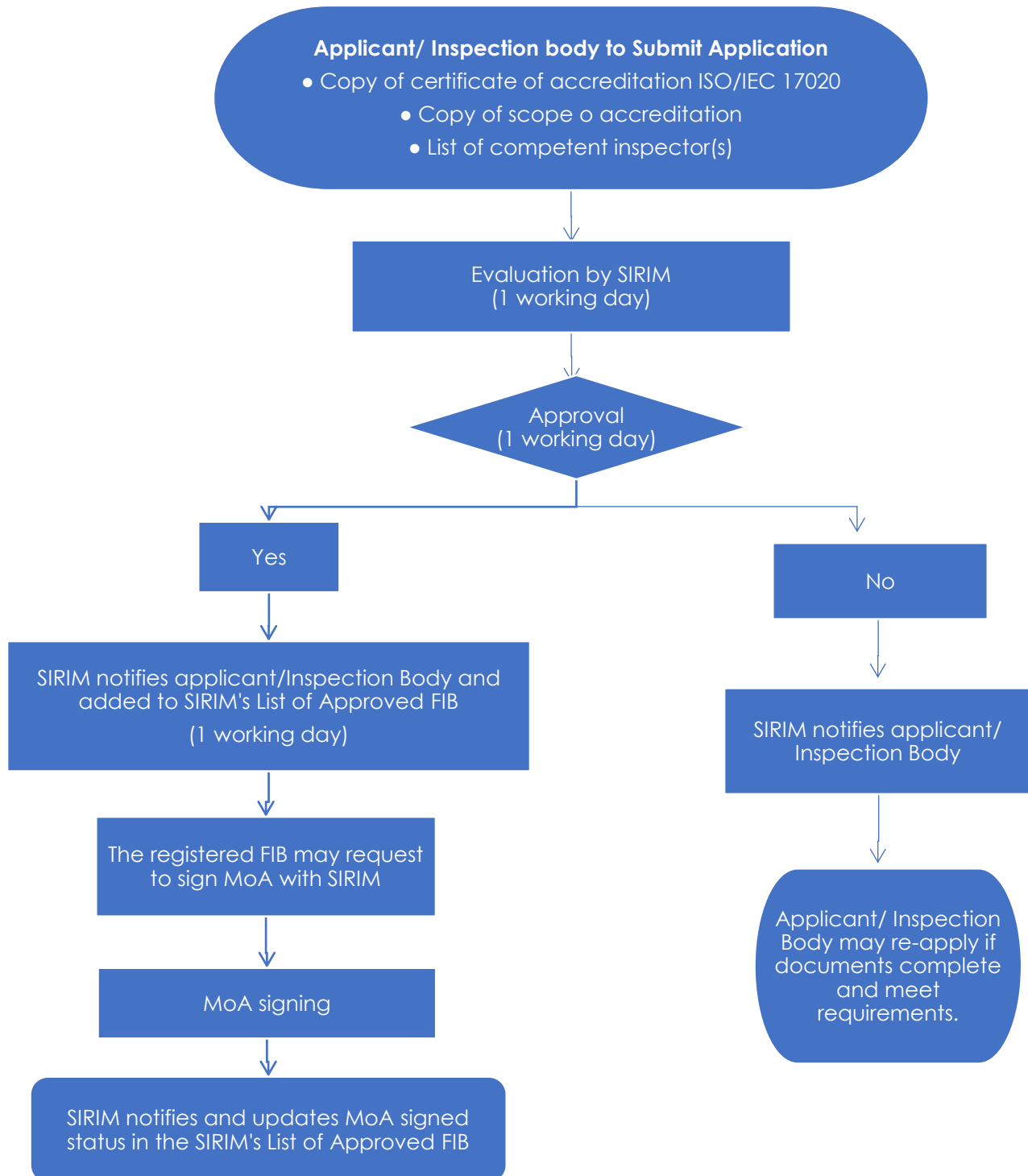
8 REFERENCES

No.	REFERENCES
1.	Department of Environment (DOE) "Garis Panduan Pengimportan Sekerap Logam ke Malaysia", Jabatan Alam Sekitar, Keluaran Pertama, Januari 2020
2.	ISO 2859-1: Sampling procedures for inspection by attributes – Part 1: Sampling schemes indexed by acceptance quality limit (AQL) for lot-by lot inspection
3.	DOE "Environmental Quality (Scheduled Wastes) Regulations 2005"
4.	DOE "Environmental Quality Act 1974"
5.	GB 16487.7-2017 Environmental Protection Control Standard for Imported Solid Waste as Raw Material

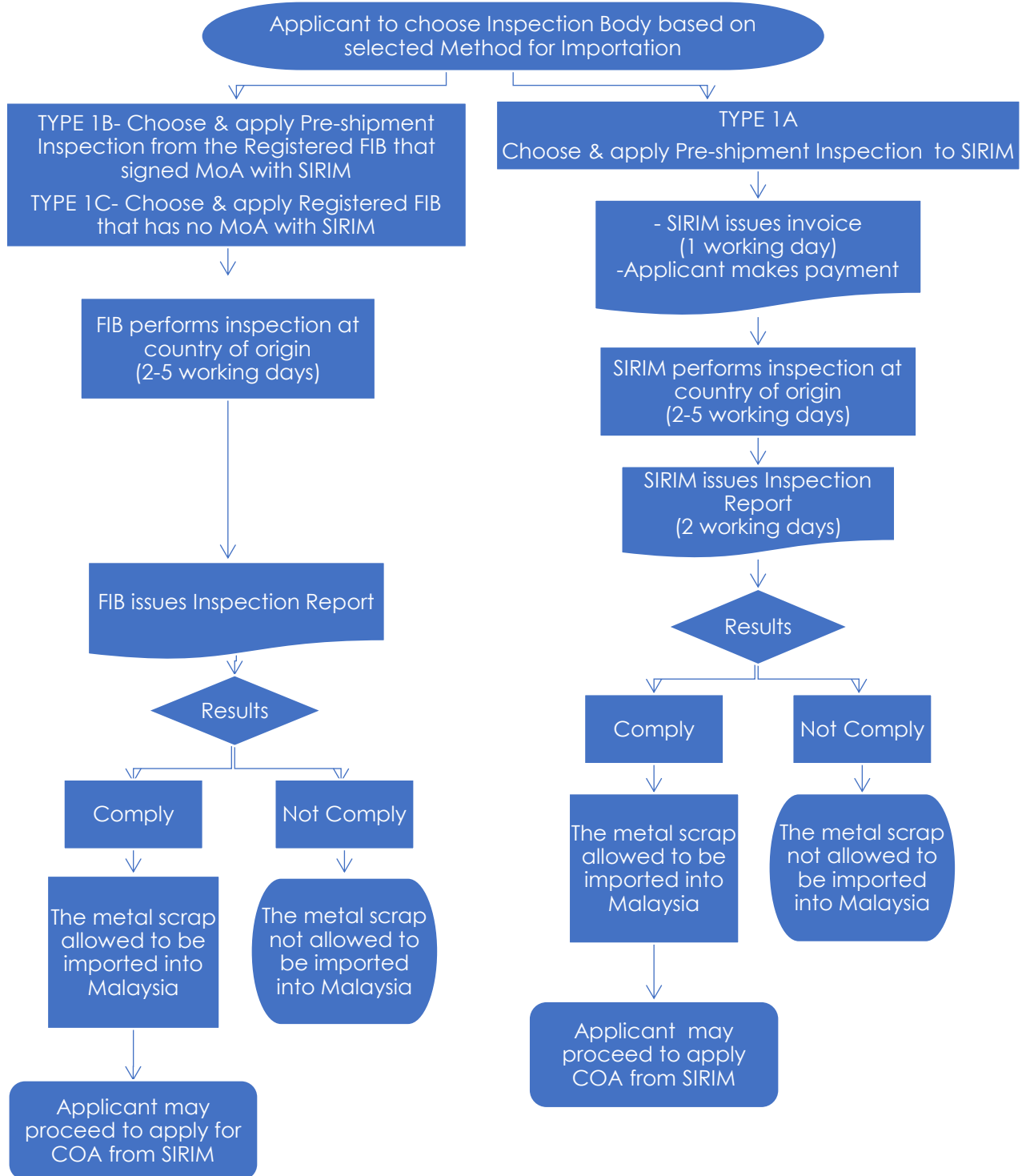
FLOWCHART 1: OVERVIEW OF THE PROCESSES FOR IMPORTATION OF METAL SCRAP INTO MALAYSIA



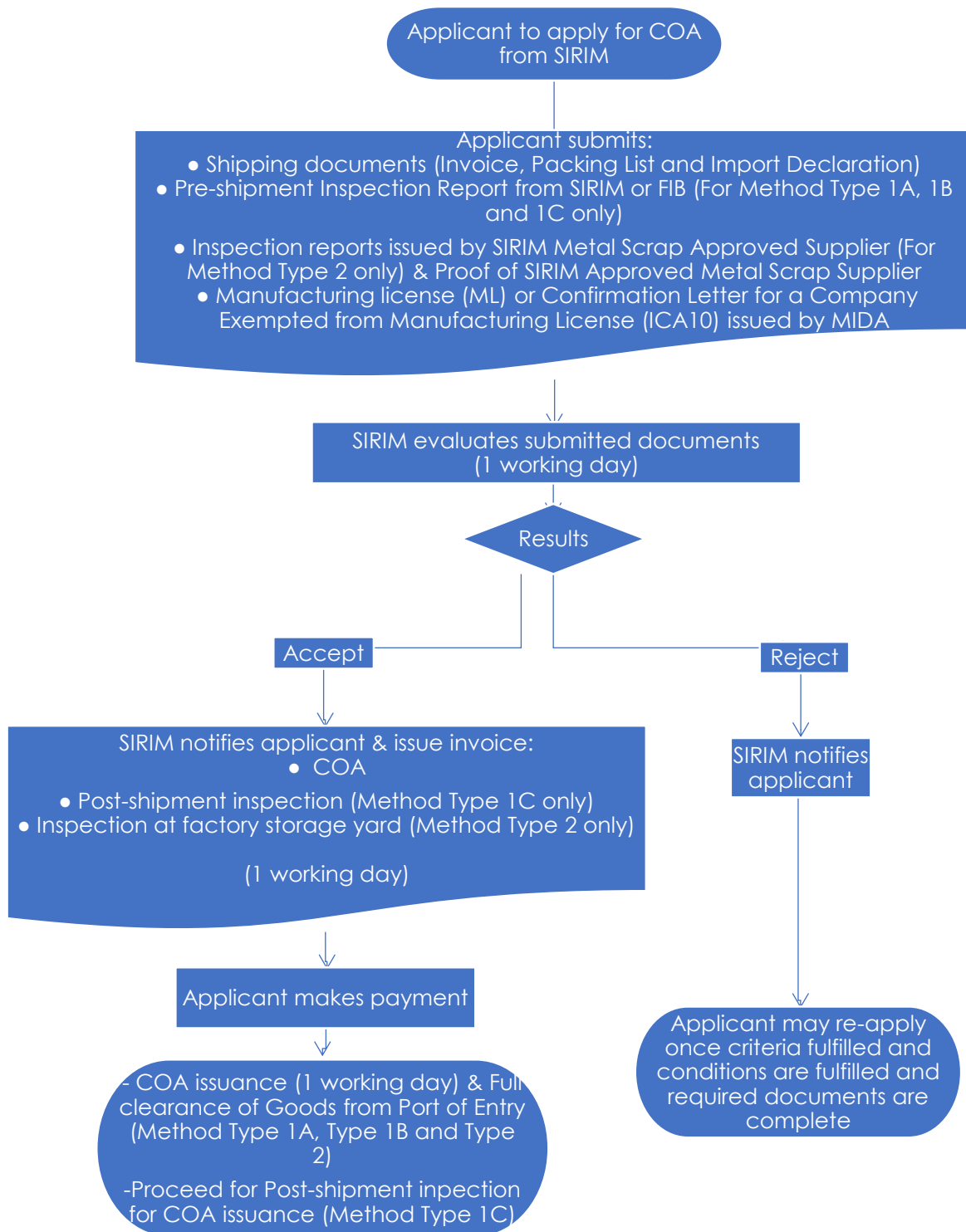
FLOWCHART 2: REGISTRATION OF FOREIGN INSPECTION BODY (FIB)



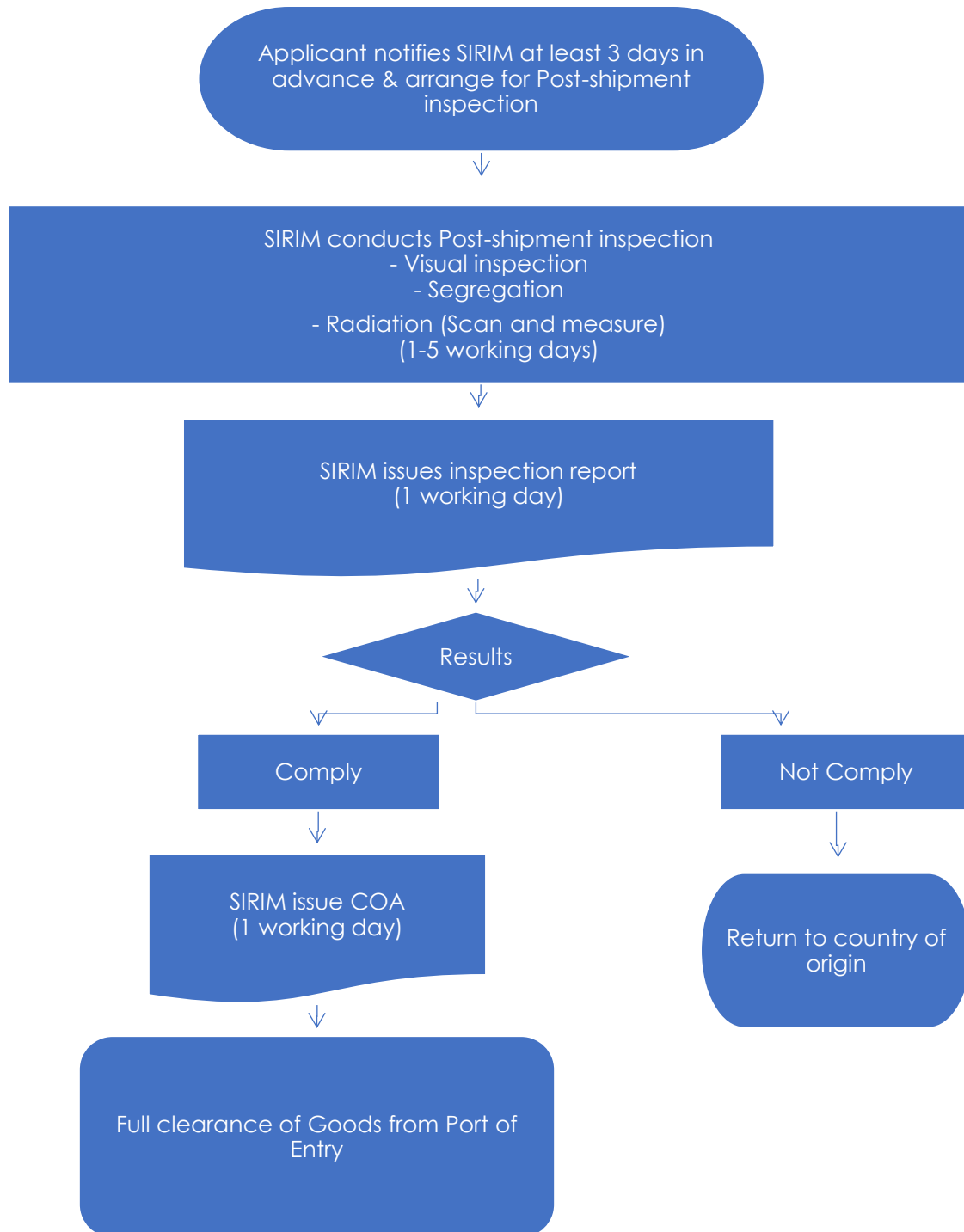
FLOWCHART 3: PRE-SHIPMENT INSPECTION (APPLICABLE FOR METHOD TYPE 1A, 1B AND 1C)



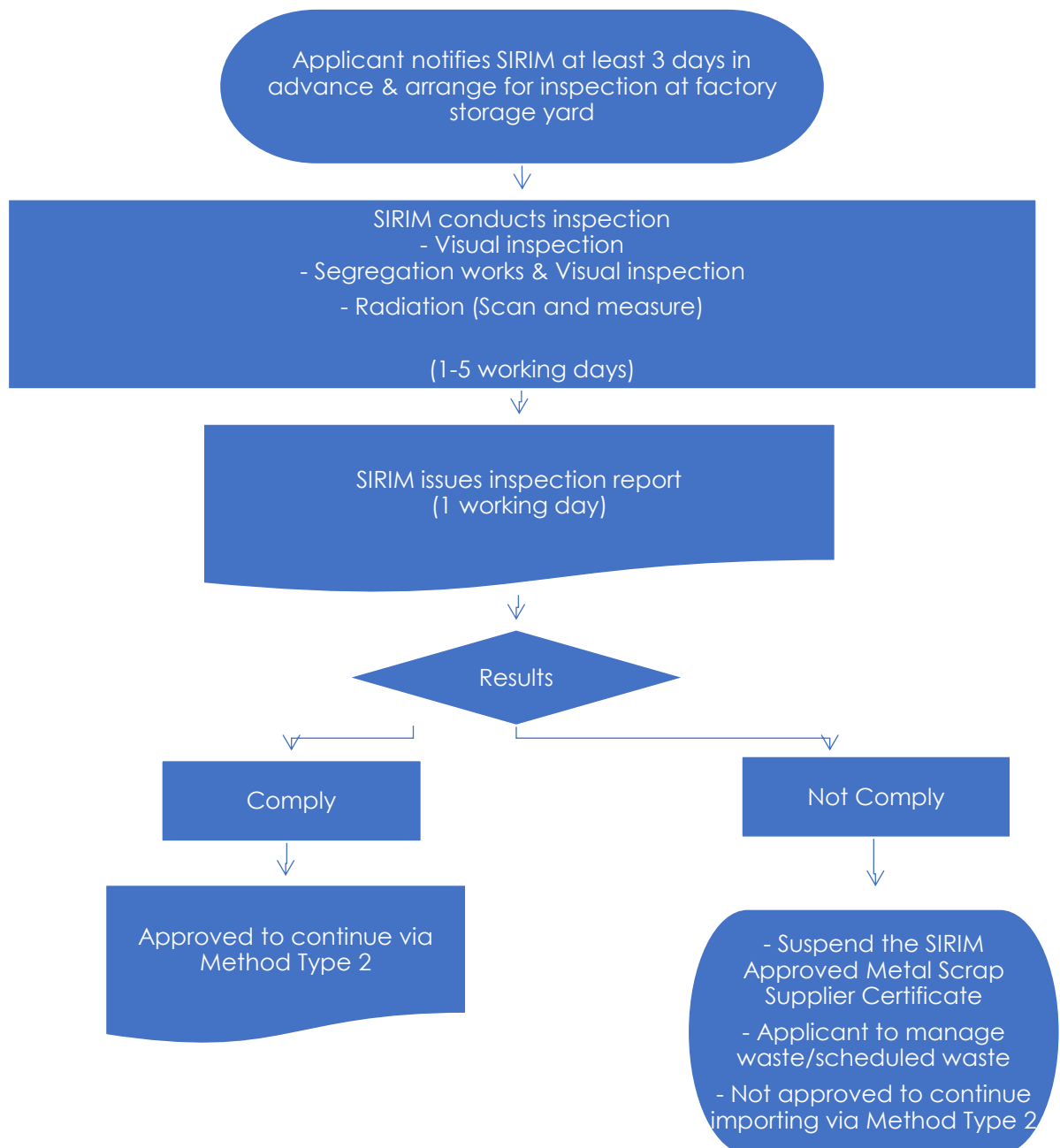
FLOWCHART 4: COA APPLICATION



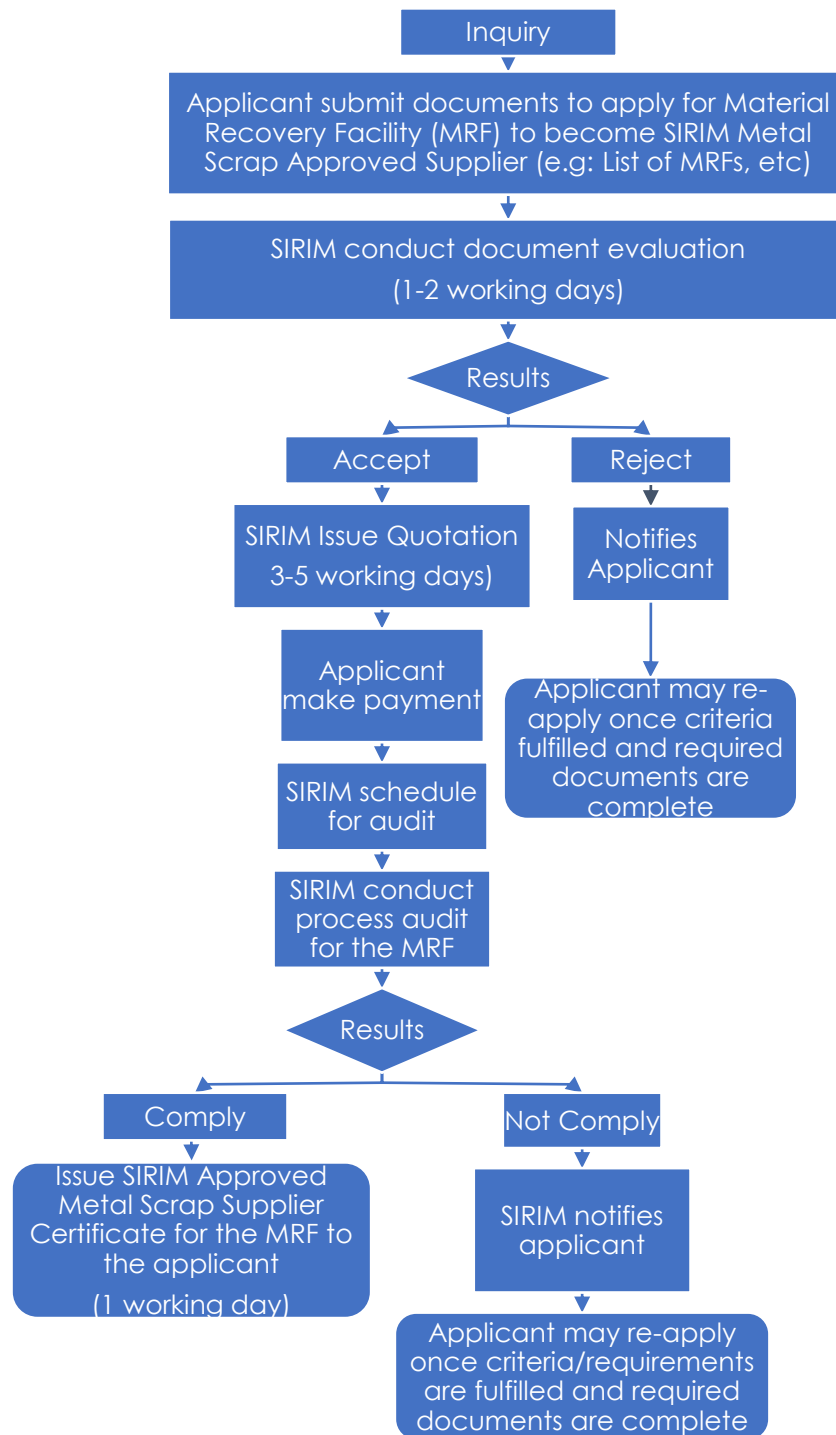
FLOWCHART 5: POST-SHIPMENT INSPECTION FOR METHOD TYPE 1C ONLY



FLOWCHART 6: INSPECTION AT FACTORY STORAGE YARD (METHOD TYPE 2 ONLY)



FLOWCHART 7: SIRIM METAL SCRAP APPROVED SUPPLIER





SIRIM QAS International Sdn.Bhd.

SIRIM Complex No.1, Persiaran Dato' Menteri,
Section 2, P.O Box 7035, 40700,
Shah Alam, Selangor Darul Ehsan,
Malaysia

Tel: 603 5544 6400
Fax: 603 5544 6810
Email: cserviceqas@sirim.my
Website: www.sirim-qas.com.my